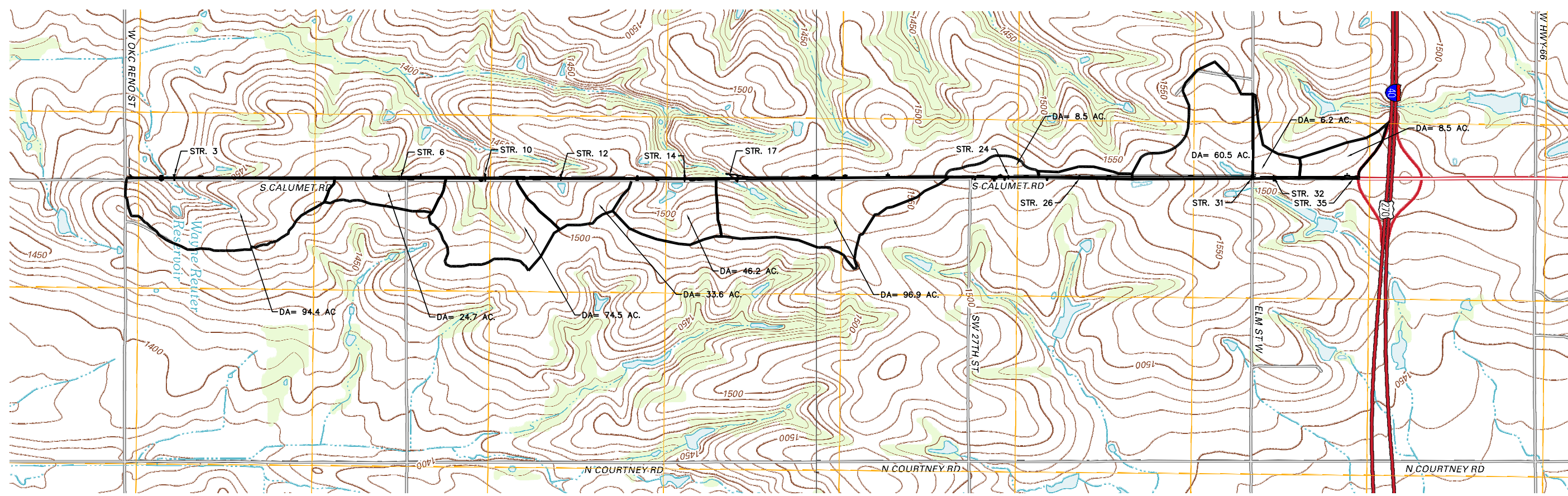


REVISIONS		
REV. NO.	DESCRIPTION	DATE
-	-	-

DRAINAGE STRUCTURE DESIGN RECORD																			
STR. NO.	STATION	EXISTING STRUCTURE		EXISTING OVERTOPPING CAPACITY	AREA IN PLACE	DRAINAGE AREA	"C" RUNOFF COEF.	"Tc" TIME OF CONCEN.	I ₁₀	Q ₁₀	PROPOSED STRUCTURE			FLOWLINE INLET	FLOWLINE OUTLET	STRUCTURE SLOPE	OVERTOPPING CAPACITY	OUTLET VELOCITY	REMARKS
		SIZE	TYPE								CFS	SQ FT	AC.						
3	108+41.00	24"	CGMP	44.31	3.14	94.42	0.35	40.06	3.32	109.72	42"	RCP	62	1411.79	1410.86	0.0150	119.21	12.72	
6	150+36.00	24"	CGMP		3.14	24.69	0.35	28.97	3.97	34.35	24"	RCP	117	1446.10	1444.10	1.1800			
10	166+42.00	16"	STEEL	21.34	1.40	74.52	0.35	39.09	3.37	87.83	42"	RCP	75	1447.00	1446.00	0.0133	118.80	11.21	
12	180+52.00	24"	CGMP	23.94	3.14	33.62	0.35	30.13	3.89	45.80	30"	RCP	46	1478.00	1477.50	0.0109	40.98	9.35	
14	203+60.00	18"	CGMP	23.29	1.77	46.18	0.35	32.53	3.73	60.36	36"	RCP	67	1473.50	1472.75	0.0112	94.32	10.21	
17	213+50.00	18"	CGMP	16.22	1.77	96.86	0.35	49.77	2.92	98.84	42"	RCP	68	1476.40	1475.55	0.0125	134.60	11.74	
24	264+00.00	24"	CGMP	19.47	3.14	8.54	0.35	45.55	3.08	9.20	24"	RCP	48	1545.00	1544.55	0.0095	25.25	6.04	
26	277+25.00	12"	CGMP	4.21	0.79	5.10	0.35	35.88	3.54	6.31	24"	RCP	43	1543.30	1542.50	0.0186	20.84	6.67	
31	309+37.00	24"	STEEL	77.39	3.14	60.45	0.35	40.18	3.31	70.12	36"	RCP	74	1508.25	1507.85	0.0054	99.06	10.58	
32	313+50.00	30"	CGMP	36.27	4.91	6.19	0.35	27.85	4.06	8.79	24"	RCP	85	1503.00	1501.38	0.0192	57.50	7.70	
35	328+35.79	30"	RCPE	40.79	4.91	8.51	0.35	35.09	3.58	10.67									EX. STRUCT. TO REMAIN



N:\AF45-CALUMET RD-CANADIAN COUNTY\DRAWINGS\DRAINAGE MAP.DWG 9/5/2017

DESIGN	GCS		CALUMET ROAD CANADIAN COUNTY OKLAHOMA DEPARTMENT OF TRANSPORTATION DRAINAGE DESIGN RECORD AND MAP STATE JOB NO. 27858(04) SHEET NO. R001
DRAWN	GLH		
CHECKED	GCS		
APPROVED			
SQUAD	MKEC		